

#trctrails | @trctourism



Image Courtesy of Thredbo

Program

HOSTED BY

TRC



Elite SPONSOR

lakecrackenback
resort & spa



Sponsor



CSIS sustainable
infrastructure
systems
www.sisau.com.au





HOSTED BY

TRC



Welcome



Welcome to the Sustainable Trails Conference proudly hosted by TRC Tourism.

As we have travelled around Australasia working with governments and the community on trails projects over the last few years, we have seen the development of a burgeoning industry and trails sector. Where once we talked about tracks and trails as infrastructure, now we are looking at trails based experiences, and trails at the core of some of our great destinations. There is huge investment in the trail network across Australia and New Zealand, and strong competition for funding.

There is so much to learn for all of us in terms of trends in trail use, planning, design and maintenance as well as measuring and delivering benefits from our trails. How should we manage across multiple land tenures, multi governments, capitalise on volunteers and run events?

The team at TRC Tourism is delighted to have been able to bring so many people together from across Australia, New Zealand, Papua New Guinea, Nepal and Japan. We look forward to the discussions over the next three days. Take the time to share your knowledge and learn from others, and to enjoy the beautiful environment of the Snowy Mountains.

I look forward to meeting you all.

Janet Mackay

Director

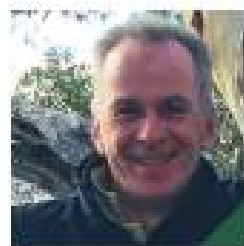
TRC Tourism Pty Ltd



Chris Halstead



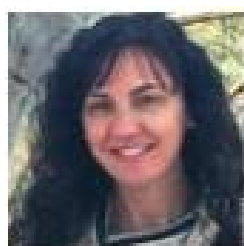
Alistair Henchman



Chris Rose



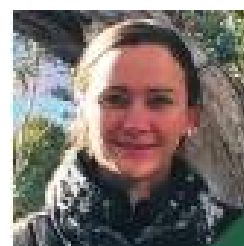
Emma Knezevic



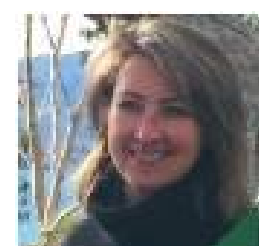
Penny McLennan



Tracy Johnston



Donna Graf



Jo Davis

Program



HOSTED BY



MONDAY 1 MAY		
3.00pm onwards	Thredbo Alpine Hotel - Accommodation check-in	
4.00pm – 6.00pm	Registration	Thredbo Alpine Hotel Reception area
6.30pm – 8.30pm	Welcome Function	Thredbo Alpine Hotel Lounge Bar
TUESDAY 2 MAY – Kosciuszko Room, Thredbo Alpine Hotel		
8.30am– 8.50am	Welcome	Janet Mackay – TRC Bruce Marshall – Lake Crackenback Stuart Diver – Thredbo
The Sustainable Trails Context – Facilitated by Chris Rose TRC		
8.50am – 9.15am	The Trails Context – from bare earth to world class destinations	Janet Mackay TRC
9.15am – 9.45am	How trails can contribute to a destination - Queenstown New Zealand	Kaye Parker Queenstown Trails Trust
9.45am – 10.15am	How trails can contribute to a destination - Tasmania's Great Walks	Peter Mooney Consultant
10.15am – 10.40am	Morning tea	
10.40am – 11.10am	When is enough, enough? - Lessons from Australian & NZ trails	Dave Bamford & Janet Mackay
11.10am – 11.40am	The role of trails in positioning a destination	Charlotte Prouse & Carl Solomon Destination Marketing Store
11.40am – 12.05pm	Kosciuszko National Park - The trails context over 70 years	Pam O'Brien NSW NPWS
12.05pm – 12.30pm	Panel discussion	All of the above
12.30pm – 1.15pm	Lunch (Pool side BBQ)	
Delivering the Social and Economic Benefits from Trails – Facilitated by Alistair Henchman, TRC		
1.15pm – 1.40pm	Measuring the benefits of Victoria's trail investment	Kane Boardman Regional Development Victoria (RDV)
1.40pm – 2.05pm	The benefits that trails and events have delivered for Rotorua	Cr Dave Donaldson MTB Events Limited Rotorua Lakes Council
2.05pm – 2.30pm	Bringing stakeholders on the Ride	Peter Stokes & Kain Gardener DEWNR SA
2.30pm – 2.55pm	Maintaining the asset – some simple solutions	Paul Wilson Xyst Planning, New Zealand
2.55pm – 3.15pm	Panel discussion	ALL of the above
3.15pm – 3.35pm	Afternoon tea	
Our Local Area Success – Facilitated by Janet Mackay, TRC		
3.35pm – 5.00pm	A community working together to create a trails destination - Snowy Mountains, Australia	Panel including: • Alana Dickeson, Snowy Monaro Regional Council • Craig Stonestreet, Jindabyne Trails Stewardship • Stuart Diver & Euan Diver, Thredbo • Bruce Marshall, Lake Crackenback Resort • Anthony Evans, NSW NPWS
5.00pm – 5.15pm	INNOVATION SNAPSHOT Virtually hooked on trails	Rod Annear DPaW
7.00pm	Dinner – The Denman	

WEDNESDAY 3 MAY – Kosciuszko Room

Sustainable Planning and Management– Facilitated by Tracy Johnston TRC

8.30am – 8.50am	What can trail development learn from sky scrapers and luxury homes?	Dave Wilcox Common Ground
8.50am – 10.00am	Strategic approaches to trails planning:	
	Western Australia	Steve Bennett, Sport & Rec WA
	Barwon South West, Victoria	Chris Halstead, TRC
	Wellington New Zealand	Sarah Murray, WCC
	Northern Territory	Mac Moyses, NT Parks & Wildlife
	Achieving a rail trail in NSW	Hilary Wise, Northern Rivers Rail Trail
	The Te Ara Mangawhero Trail NZ	Dean Sherrit, Ruapehu
10.00am – 10.10am (10mins)	INNOVATION SNAPSHOT Technology and monitoring	Paul Wilson Xyst New Zealand
10.10am – 10.40am	Morning tea	
10.40am – 12.20pm	CONCURRENT SESSIONS	
Sustainable Mountain Biking Chris Halstead Facilitator (Tate Room)	What does sustainable planning mean?	Nick Bowman Destination Trails
	Walking the talk: Commitment to sustainable shared use trails in South Australia	Matthew Ackland DEWNR SA
	Western Australia's MTB Guidelines	Peta Demidenko Westcycle
	Update and discussion: National Standards for design and construction MTB trail builders national accreditation framework	Denise Cox, MTBA
	Establishing an organisation to represent the Australian MTB trail building industry DISCUSSION – adoption of national standards etc	Craig Meinicke Craig Stonestreet Mountain Bike Australia
Measuring the benefits of trails Alistair Henchman Facilitator (Kosciuszko Room)	The role events have played in Taupo NZ	Rowan Sapsford Perception Planning
	The contribution of events to the Queens Town Trails Trust	Kay Parker QTT
	Case Study, North East Tasmania	John Brown Break O'Day Council
	What data do you need to gather to measure benefits?	Michael Connell MCA Economist
	How trails contribute to biodiversity conservation	Rod Annear DPaW WA
	DISCUSSION – Is there a consistent or common approach that can be adopted?	
Planning and managing great walks Janet Mackay Facilitator (Townsend Room)	Three Capes – planning and management Tongariro – history of growth and issues	Peter Mooney Dave Bamford & Warren Furner
	The Grampians Peaks Trail	Stuart Hughes Parks Victoria
	Kakadu, a jointly managed park	Tracey Diddams Parks Australia
	NSW approach to delivering great walks	Matt Colahan OEH
	DISCUSSION - What makes a great walk?	



HOSTED BY



WEDNESDAY 3 MAY (CONT)		
12.30pm – 1.00pm	Collect lunch and afternoon tea for field trip (from Kosciuszko Room)	
1.00pm – 5.00pm	FIELD TRIPS – PICK ONE OPTION	
	1. Sustainable MTB Planning and Management Master Class	Classroom and field (Townsend Room)
	2. Thredbo Resort Trails	Inspection of MTB trails/chairlift/walk
	3. Thredbo Valley Track Upper (max 20)	Easy/Intermediate – upper section
	4. Thredbo Valley Track Lower (max 10)	Intermediate/hard – lower section
	5. Kosciuszko Main Range	Walking tracks – Steel Walkway/ Mt Kosciuszko look out/ Dead Horse Gap
7.00pm	Dinner -Kosciuszko Room Guest dinner speaker – Ang Rita Sherpa Recovery of the Everest Trails after an earthquake	
THURSDAY 4 MAY – Kosciuszko Room		
Governance and funding – Facilitated by Janet Mackay TRC		
8.30am – 10.00am	Management, funding and use of community groups or volunteers	
	Supporting and Funding Trail Advocacy	Nick Bowman Destination Trails
	Rotorua NZ	Cr Dave Donaldson MTB Events Limited & Rotorua Lakes Council
	Queenstown NZ	Kaye Parker Queenstown Trails Trust
	Bibbulmun Track WA	Linda Daniels Bibbulmun Track Foundation
	Taupo NZ	Rowan Sapsford Perception Planning
	Adelaide and Mount Lofty SA	Peter Stokes Adelaide & Mt Lofty Ranges
10.00am – 10.20am	Panel and forum discussion	All of the above
10.20am – 10.40am	Top 10 Marketing Trends for Trails	Clint Wright Converge Marketing
10.40am – 11.00am	Morning tea	
11.00am – 12.00pm	Forum discussion - Innovation in governance, funding and marketing	Open discussion
12.00pm	Conference conclusion and wrap up	

Speakers



HOSTED BY



Matthew Ackland

AMRL Trails Officer | Dept. Environment, Water & Natural Resources

Matthew has served on the Adelaide Mount Lofty Ranges Trails Management Reference Group, O'Halloran Hill Recreation Park Trail Planning Reference Group, has successfully created two dedicated volunteer groups focussed on trails maintenance. Matthew has also served as President of the Adelaide Mountain Bike Club since 2013. Matthew was recently appointed Project Manager for the repair of South Australia's most used walking trail, The Waterfall Gully to Mount Lofty Summit Trail, after it was damaged in storms in September 2016, a project valued in excess of \$2M.



Rod Annear

Assistant Director Parks Visitor Services | WA Dept. of Parks and Wildlife

Rod Annear has worked in protected area management for more than 30 years. He is currently the Assistant Director for Parks and Visitor Services with the Department of Parks and Wildlife in WA. In this role, Rod uses his knowledge and passion for technology to attract, inform and direct park visitors. He works with a team of creative designers, interpreters and architects to deliver high quality innovative experiences and facilities to Western Australian parks, including trails such as the Munda Biddi and Bibbulmun Track. He can be a bit nerdy when it comes to gadgets and has a weakness for coffee, pale ale and 1970s fashion.



Dave Bamford

Dave Bamford is a Wellington-based tourism business advisor and has spent a lifetime creating sustainable tourism solutions and his experience in over 30 countries covers all aspects of policy planning and operations of national parks and tourism operations. His professional achievements demonstrate a critical understanding, knowledge and track record of using tourism to provide employment, enhance the welfare of communities while protecting the place, its integrity, and its natural and cultural heritage. He has a thorough understanding and practical experience of trail planning and development. He led the market demand study that underpinned the successful NZ Cycle Trails Project and is a founder and director of the innovative Timber Trail Lodge.



Steve Bennett

Senior Policy Officer- Outdoor Recreation | Department of Sport and Recreation

Steve Bennett has worked in the recreation industry for 35 years. He is currently the Senior Policy Officer, Outdoor Recreation for the Department of Sport and Recreation in Western Australia. His current role involves working closely with other agencies and stakeholders to maintain a strategic vision for trails development across Western Australia. Steve and partners are about to launch the "Western Australian Strategic Trails Blueprint 2017-2021."



HOSTED BY



Kane Boardman

Major Projects & Tourism | Regional Development Victoria

Major Projects and Tourism Program Manager at Regional Development Victoria, Kane sits on the project committees overseeing the construction of the Grampians Peaks Trail and planning the upcoming expansion of the Great Ocean Walk. Kane brings more than 15 years experience in the tourism and recreation sector across private and public sector roles in both Australia and New Zealand. Recently, at Tourism WA, Kane's role involved securing funding for the Denmark Wilderness Walk and Bibbulmun Track Northern Terminus from the Tourism Demand Driver Infrastructure Fund. Kane's prior experience in evaluating the impact of walk and cycle trails in Victoria's High Country and first hand experience of completing the Falls to Hotham Crossing and Buller EPIC Mountain Bike circuit assists him in presenting Regional Development Victoria's Economic Benefit of Trails research



Nick Bowman

Destination Trails Pty Ltd

Nick has worked in a professional capacity to develop sustainable recreational trails since January 2002. Nick was instrumental in establishing and then managing IMBA Australia for 5 years with significant benefits to MTB riders across the country. Much of Nick's work has been based on implementing the State MTB Plan for SA which was released in 2001. This work was conducted while working for Bicycle SA, Greening Australia and the City of Mitcham, but also as a private contractor. More recently Nick has been back designing and building trails, including working with World Trail to help create sweet trails in Atherton (Qld) and Derby (Blue Derby, Tas). Nick has launched his own brand for trail consultancy, design and construction - Destination Trails Pty Ltd. As a dedicated disciple of the IMBA trail development model and trail difficulty rating.



John Brown

General Manager | Break O'Day Council

John Brown is General Manager of the Break O'Day Council (located on the northern part of Tasmania's magnificent East Coast) which partnered with neighbouring Dorset Council to develop and operate the world renowned Blue Derby MTB trail. His accounting and project development skills have been to the forefront of working with his Council team to develop the case for Stage 2. Selling the benefits to the Tasmanian and Australian Governments has required a focus on the economic benefits which can flow backed by tangible examples. Design and approvals for Stage 2 of the Blue Derby network is well underway.



Matt Colahan

Visitor Experience Branch | NSW National Parks & Wildlife Service

Matt Colahan is the Senior Project Officer leading state wide priority projects for visitor experiences in NSW National Parks. Matt joined NPWS in 2007 following a very successful 20 year career in regional tourism and hospitality management. Matt has been responsible for the planning for visitation in new reserves, implementation of recreation strategies, market engagement for private sector investment and developing signature experiences for NSW national parks.



HOSTED BY



Michael Connell

Principal | MCa

Michael is Principal of MCa as an economist, he specialises in: the analysis of regions and cities; industry futures, economic impact assessments; and feasibility studies and business cases for infrastructure projects.

His tourism projects in Australia and New Zealand, have included assessments of: mountain bike trails; accommodation (ranging from 5 star hotels to camping grounds); and other tourist infrastructure.

Michael has also completed major projects covering: agribusiness development; education and training; sports and recreation facilities; the energy sector; development of cities and precincts; and the options for the regeneration of waterfront areas.



Denise Cox

Trails and Operations Manager, Mountain Bike Australia

Denise has had the opportunity to work in a variety of roles within not for profit sport organisations, local government, international and national multi sport events and as a consultant in sport and recreation planning and active transport. Her role as Trails and Operations Manager at Mountain Bike Australia provides the opportunity to utilise these skills working with the mountain bike community and key stakeholders to achieve a vision of more people riding off road more often. Denise has had a life long obsession with two wheels and discovered mountain biking back in the early 90's. She is the founder of the Fraser Coast Mountain Bike Club and enjoys seeking out new places to ride relishing the opportunity to travel and ride interstate and overseas.



Linda Daniels

Executive Director | Bibbulmun Track Foundation

Linda was appointed Executive Director of the Bibbulmun Track Foundation in 2003. For over a decade Linda's key drive has been to improve both the marketing of Western Australia's trails and public access to up-to-date information through the Top Trails project and Trails WA website.

Her interest in trails and tourism started in her teens when she left home to travel and spent the next eight years backpacking and working in the tourism industry from ski chalets and hotels to dive boats and coral islands. She admits that she now spends far too much time at a desk trying to inspire others to get outdoors and not enough time doing it herself!



Peta Demidenko

MTB Development Manager | WestCycle

Peta Demidenko is the Mountain Bike Development Manager at WestCycle, the peak body for cycling in WA. She manages the implementation of the WA Mountain Bike Strategy. Peta has been in the WA MTB community for over 10 years, is a national accredited level 1 MTB Coach and has competed at local, state and national events. She has a technical background in project management, information technology and records and information management and has experience in both the public and private sectors. Mountain biking is a way of life for Peta!



HOSTED BY



Alannah Dickeson

Recreation and Environmental Coordinator | Snowy Monaro Regional Council

Alannah Dickeson has been working as Recreation and Environmental Coordinator for the past 4 years with Snowy Monaro Regional Council. My focus has been working with local community groups and key stakeholders to expand and maintain the Lake Jindabyne shared trail network. Prior to working with Local Government I worked with NSW National Parks and Wildlife as a Ranger for 6 years. I have a passion for nature based tourism and conservation. I took up mountain biking 5 years ago and have been addicted since,



Tracey Diddams

Tourism & Visitor Services Manager | Kakadu National Park

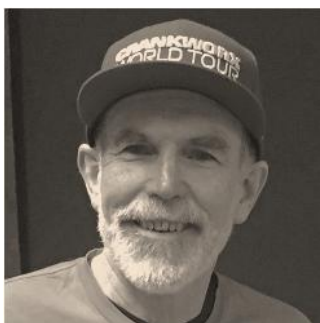
Tracey Diddams has spent the last five years in World Heritage Listed, Jointly Managed Kakadu National Park as the Tourism and Visitor Services Manager. Many of the park's walking tracks have not been improved or upgraded for up to 20 years and management of overnight bushwalking with no guidelines has proven challenging. In 2011, the park commenced development towards a Walking Strategy of which Tracey took the lead as project manager. Over five years of consultation, working together with track builders reviewing all walks and researching Australian Standards and best practice, the Kakadu Walking Strategy and subsequent Walking Track Manual were endorsed for implementation in 2016, with works commencing 2017.



Stuart Diver

Resort Operations Manager | Thredbo Resort

Stuart has worked in Thredbo Resort since the early 90's in a variety of roles. For the past 5 years he has been Resort Operations Manager. As part of this role Stuart has played an integral role in the expansion of the Thredbo Mountain Biking business including the building of a new trail network and the acquisition and expansion of the Thredbo MTB business. Stuart lives in Thredbo year round with his young daughter and is a keen outdoor enthusiast who enjoys the huge variety of activities that Thredbo and the Snowy Mountains has to offer.



Dave Donaldson

Board of Directors | Mountain Bike Events

Dave was a founding trustee of the Home of Cycling Charitable Trust and is chairman of the board of directors of Mountain Bike Events Ltd, which holds the licence to deliver Crankworx Rotorua 2015 - 2027. He is also the Rotorua Deputy Mayor - since 2013. Like most Kiwis he has enjoyed a variety of sports, preferring the outdoors variety and has been deeply involved in mountain biking for recreation, racing, plus as a land access and trails advocate since 1993. His experience in event organization covers everything from policing major sporting events to organizing the Kids Bike Jam to leading the bid for and chairing the Organising Committee for the 2006 UCI MTB and Trials World Champs.



HOSTED BY

TRC



Anthony Evans

Area Manager | NSW National Parks & Wildlife Service

Anthony is based in Jindabyne and is the Area Manager for Alpine-Queanbeyan Area with NSW NPWS. His team has responsibility for visitor management in the central part of Kosciuszko National Park which includes the summit of Mt Kosciuszko as well as Brindabella National Park, adjacent to the ACT. Currently his team is managing upgrades to the Main Range Walking Track as well as the construction the Thredbo Valley Track extension. Prior to working for NPWS, Anthony worked for the ACT government as the first Project Manager for Stromlo Forest Park, and prior to that for NSW Forestry Corporation. He is a keen cyclist, runner and Cross Country Skier, having competed in these events for over 30 years.



Warren Furner

Land Transport / Economic Development Manager | Ruapehu District Council

Over the past two decades I have established and maintained relationships with key stakeholders, in particular Maori partnerships within Ruapehu while managing the Community Infrastructures and Commercial Concessions portfolios within Tongariro National Park, Dual World Heritage area. A key to this recent success has been my ability to merge transport economics with wider community economic aspirations through the economic development strategy, "Growing Ruapehu Economic Development Strategy 2015" Alignment of Council's strategic framework to that of Central Government and New Zealand's Business growth. Agenda is critical to success.



Kain Gardner

AMLR Senior Project Manager, Adelaide and Mount Lofty Ranges Trails and Infrastructure | Dept. Environment, Water & Natural Resources

Kain has been involved in trail development for hiking, mountain biking, and shared-use for close to twenty years. Kain is currently managing \$9m in projects to see greater recreational use of National Parks in metropolitan Adelaide. Outside of his work at the Department for Environment, Water and Natural Resources, Kain has instigated Adelaide's hugely successful Junior Dirt Skills, a program to get kids from as young as four years old into mountain biking in a safe and fun environment.



Stuart Hughes

Director Park Planning and Policy | Parks Victoria

Stuart Hughes is the Director of Park Planning and Policy at Parks Victoria. Stuart has over 20 years' experience in park management, primarily in operational roles across metropolitan and regional Victoria, recently commencing in the planning portfolio. Stuart's current role involves visitor experience planning, park planning, and supporting implementation of planning initiatives. Stuart has been involved with local scale trails planning in previous operational roles, and more recently in the planning for the Falls to Hotham Alpine Crossing.



HOSTED BY



Bruce Marshall

Lake Crackenback Resort

Local businessman of nearly forty years with retail and commercial interests and owner of Lake Crackenback Resort Management. Started developing walking and MTB trails in and around the resort 15 years ago. LCR on the border of Kosciuszko National Park, has been host for many Mtb events, XC triathlons, Kosciuszko Alpine Guided Walks (KAGW), river rafting & Segway tours. An advocate for the development of mountain biking as a destination driver in the Snowy Mountains for non-winter months, he has been working with NPWS on trail development, walking, Mtb riding and XC track skiing with the vision of making the area the outdoor adventure capital of Australia. Recently Bruce returned from a Queenstown, Wanaka riding tour and a little less recently Rotorua, Taupo. He is aware of what can be and needs to be done to develop a destination.

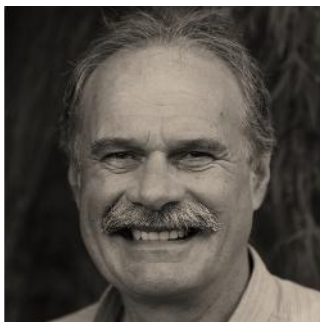


Craig Meinicke

TouchPoint One

Craig is the director and owner of TouchPoint One, a consultancy firm that assists clients to be more efficient and effective in how they operate. He has over 20 years' experience in various operational and strategic roles across the water, transport, resource and recreation sectors.

Craig is currently writing strategic plans and infrastructure development plans for several MTB clubs in South East Queensland. His company also provides trail auditing services using innovative approaches to data capture and analysis. Craig enjoys exploring new trails with his son and is actively involved in trail care and trail advocacy.



Peter Mooney

Consultant

Peter started as a Trainee Ranger and progressed to be the General Manager of the Tasmania Parks and Wildlife Service for the past 12 years. This position enabled Peter to oversee many major initiatives for conservation and tourism. Often resulting in remarkable outcomes. The establishment of the outstanding Three Capes Track multi day walk, which has already proven to be a significant boost to regional tourism in Southern Tasmania. Peter was recently awarded the "Tourism Champion for 2016" by the Tourism Industry Council of Tasmania. Peter is now using his vast knowledge and experience in sustainable practices by providing advice to ecotourism operators wishing to establish and/or expand their services within Australia's wild places.



Mac Moyses

Director Planning Services | NT Parks and Wildlife

Mac Moyses has been with NT Parks for 33 years as a ranger, a park planner and currently as a Director with oversight of the agency's planning and infrastructure programs. An avid trail walker and runner in his younger years he discovered five years ago the joys of mountain-biking. As a resident of Alice Springs, what better place to make this discovery and be able to merge personal with professional interests. He's on a mission to converge all players around the vision that Alice Springs will offer a diversity of MTB / shared trail experiences equal to the best - sustainably so, of course.



HOSTED BY

TRC



Sarah Murray

Community Partnership Manager | Wellington City Council NZ

Sarah Murray is the Community Partnerships Manager at Wellington City Council and leads a dynamic team focused on finding innovative new ways to engage people in sport and active recreation in a variety of settings including the city's many parks and open spaces. She has a background in recreation management and community engagement and spent 12 years working at the Department of Conservation before moving into local government in 2016. She is currently leading a cross agency project to develop a strategic framework for Wellington's regional trails network and is a keen trail user (both on foot and on two wheels) in her spare time.



Pam O'Brien

Area Manager | NSW National Parks & Wildlife Service

Pam has extensive experience in protected area management having been employed by NSW National Parks and Wildlife Service over the past 25 years. She has worked in a number of locations within Kosciuszko National Park as well as Namadgi NP and Tidbinbilla Nature Reserve in the ACT and Sydney Harbour National Park. Pam is currently an Area Manager in Kosciuszko National Park and is responsible for the construction and/or maintenance of a number of high profile walking and mountain biking tracks including the TVT, Kosciuszko Walk, Dead Horse Gap and parts of the BNT and Alpine Walking Track. During her career Pam has seen many developments in trail construction and maintenance techniques, along with changing attitudes towards tourism and access in National Parks.



Kaye Parker

Former CEO, Queenstown Trails Trust NZ

Kaye became CEO of the Queenstown Trails Trust in 2009 and led the successful competitive pitch to secure \$2m from the Government's Great Rides initiative raising another \$4m from the small Queenstown community. It's now the most used trail in the country. She successfully raised \$26m in 2016 from the NZ Government and two Central Otago Trusts to link the four Great Rides in Central Otago to make a 500kms+ network of trails for locals and visitors. Kaye is a visionary whose ability to persuade everyone to get involved in her many community passions is legendary.



Charlotte Prouse

Destination Marketing Store

Charlotte has been working with tourism regions, organisations and destinations to create and implement great destination brands, strategic marketing plans and experience development strategies for the last 20 years. Charlotte has worked extensively with Tourism Australia since 2005, including undertaking the positioning of 12 of Australia's National Landscapes and as part of the team to develop Experience Development Strategies. Charlotte has also developed marketing strategies for some major destinations including the Victorian Alpine Resorts and Alpine Coordinating Council, Christmas Island as well as the NSW National Parks and Wildlife Service.



HOSTED BY



Rowan Sapsford

Perception Planning

Rowan is a resource management consultant based in Taupō New Zealand. He undertakes a wide range of work in the fields of statutory planning, management planning, strategic and recreation planning and conservation management. Rowan has also undertaken several feasibility assessments for bike trail developments in New Zealand as well as providing advice to trail managers and developers. In his spare time, Rowan is heavily involved in the Taupō biking scene as a committee member and past chairperson for Bike Taupō. Bike Taupō is a community organisation responsible for building and maintaining over 200kms of biking and shared use trails around Lake Taupō.



ANG RITA SHERPA

ANG RITA SHERPA is a native of Khunde village 3780m where Sir Edmund Hillary established the hospital. Mr. Sherpa is the Senior Fellow at The Mountain Institute (www.mountain.org) has more than 25 years of professional experience in the implementation of mountain protected areas, ecotourism, community-based tourism and sustainable development project. He has a Master's Degree in Protected Landscape Management from the University of Wales, UK, and an undergraduate degree in Parks, Recreation and Tourism from Lincoln University, New Zealand. Mr. Sherpa served as Volunteer in Park Service in Yellow Stone and Grand Teton National Park in 1987 and Shenandoah and Great Smoky National Park in 2002. During this volunteer in park service, Mr. Sherpa has exchange the community based conservation approach from Nepal's experience to the staff of the above mentioned national parks and he has learnt and applied the most popular and important concepts such as the wilderness area management and the Leave No Trace (LNT) and this concept is now becoming important approach to manage the impact from visitors use.



Dean Sherrit

Ruapehu Regional Manager | Registered Professional Surveyor

Dean is Chairperson of the Ohakune Mountain Road - *Te Ara Mangawhero* - Trail Advisory Group, involved in the community development of a dual purpose walking and mountain biking trail in Tongariro National Park, New Zealand. The Advisory Group comprises of local community groups, business representatives, iwi, District Council and the Department of Conservation. In August 2016 the Advisory Group was successful in securing \$2 million of Government support for the project. He is also the President of the Ruapehu Mountain Bike Club.



Carl Solomon

Destination Marketing Store

Carl has significant experience in the visitor economy, specialising in nature and cultural tourism. He has delivered a wide range of destination management plans and sustainable tourism strategies and undertaken complex stakeholder consultation and communication. Carl has worked across the community, business and government sectors with or for organisations including the NSW National Parks & Wildlife Service (NPWS), Tourism Australia, Parks Australia and the United Nations. He was a member of the NPWS Executive for 10 years and is currently a Director of Science for Wildlife Inc. Carl has been a Partner of the Destination Marketing Store since 2014.



HOSTED BY



Darren Stewart

Makin Trax

Darren is considered one of Australia's premier track designers and builders, and has delivered hundreds of kilometres of sustainable track in some of Australia's most challenging environments. Darren's experience includes the design, construction and installation of track infrastructure such as bridges, boardwalks, viewing platforms, culverts, safety barriers and technical trail features. In addition to design and construction expertise, Darren's practical experience with conceptual planning and strategic direction for track networks is a sought after addition to many major projects. Darren has been involved in Stromlo Forest Park from the beginning of the project. Stromlo Forest Park is still the premier mountain bike park in Australia and has hosted all of the major events in world mountain biking. Darren has played a significant role in the delivery of all of these events and continues to advise and work on the parks



Peter Stokes

Adelaide and Mount Lofty Ranges | Mountain Bike Destination Project Manager | Dept. Environment, Water & Natural Resources

Peter is a Project Manager at the Department of Environment, Water and Natural Resources, facilitating the South Australian Government's commitment to establish the Mt Lofty Ranges as an International Mountain Bike Destination. With ten years background in policy and planning, Peter has been part of the changing attitudes of land managers towards active recreation in natural areas.



Craig Stonestreet

Jindabyne Trails Stewardship | Director, Natural Trails

Based in Jindabyne, Craig has 15 years' experience in the cycling industry, from beginnings as a retail bike shop owner through to manager of Natural Trails as a trail advocate, planner, designer, through to trail construction. Craig has been the driving force for cycling development in the Snowy Mountains region, sitting on several committee boards including Jindabyne Cycling Club, Jindabyne Trail Stewardship, Lake Jindabyne Shared Trail Committee and the Snowy Mountains Destination Group. Craig has designed and built trails including local Jindabyne trails, The Lake Jindabyne shared trail, the Thredbo Valley Trail, Lake Crackenback resort, Thredbo flow trail, Bungarra, Majura Pines, Isaacs Ridge DH rail and the Mt Baw Baw trails. Craig is President of the Jindabyne Trail Stewardship, a self-funding, not for profit community group which helps fund and maintain local trail networks.



Dave Wilcox

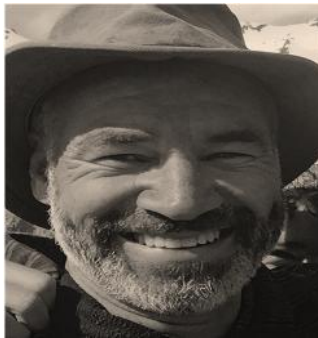
Common Ground Trails

Dave has a broad and somewhat abnormal background in marketing, design, planning, development and tourism. Since finishing his degree he has sometimes dabbled and sometimes excelled in the Web Development, Graphic Design, Film, Photography Fashion, Architecture and Trails industries. Usually learning through osmosis, and typically by surrounding himself with people more smarterer than himself, he has played a vital role in major tourism, commercial and public developments all over Western Australia. David has sat on every perceivable three dimensional side of the Mountain Bike trails fence including as consumer, volunteer, designer, builder, developer and committee member. In reality, no one really knows what this guy does, but he always seems busy.



HOSTED BY

TRC



Paul Wilson

Xyst

Paul has more than 30 years experience in all facets of parks, recreation and community facilities management. As a senior consultant with Xyst, Paul provides advice to central and local government on all aspects of parks and recreation management including business intelligence, asset management and facility planning. Paul is the past Chairperson of the International Federation of Parks and Recreation Administration (Asia Pacific) and has served on many industry bodies including the Sir Edmund Hillary Outdoor Recreation Council and Standards New Zealand Committees. Paul is an Accredited Recreational Professional of the New Zealand Recreation Association,



Clint Wright

Converge Marketing

As a digitally focused marketing communications professional with over 15 years' experience, Clint is a customer centric marketer and strong leader. He has a diverse range of expertise innovating his clients approach to brand and digital strategy development, social media, creative content development, online advertising, website development (including conversion rate optimisation), search engine marketing and analytics. Clint has delivered marketing goodness to a range of industry sectors including property, retail, tourism, professional services, government, IT and the arts. His sweet-spot, however, is tourism, and he has developed and executed award-winning marketing programs for leading attractions and destinations such as VisitCanberra, NSW National Parks and Wildlife, the National Gallery of Australia, Sovereign Hill, Snow Victoria and several Regional Tourism Organisation's and Councils across NSW. Clint is now an executive level marketing consultant who has proven experience in helping his clients understand their customers, and then engage them with the right blend of creativity and technology. He boasts a diverse skill-set when it comes to strategic planning and digital marketing management and enjoys working collaboratively with his clients to help their businesses grow.

Elite SPONSOR



Sponsor





AUSTRALIA

Suite 5, 3/4 Gippsland Street
PO Box 837, Jindabyne NSW 2627

Phone: +61 2 64562722

Email: enquiries@trctourism.com

NEW ZEALAND

Level 5, EMC Building,
5–7 Willeston Street
PO Box 2515, Wellington 6140

Phone: +64 4 4723114

Email: info@trctourism.com

www.trctourism.com

#trctrails | @trctourism